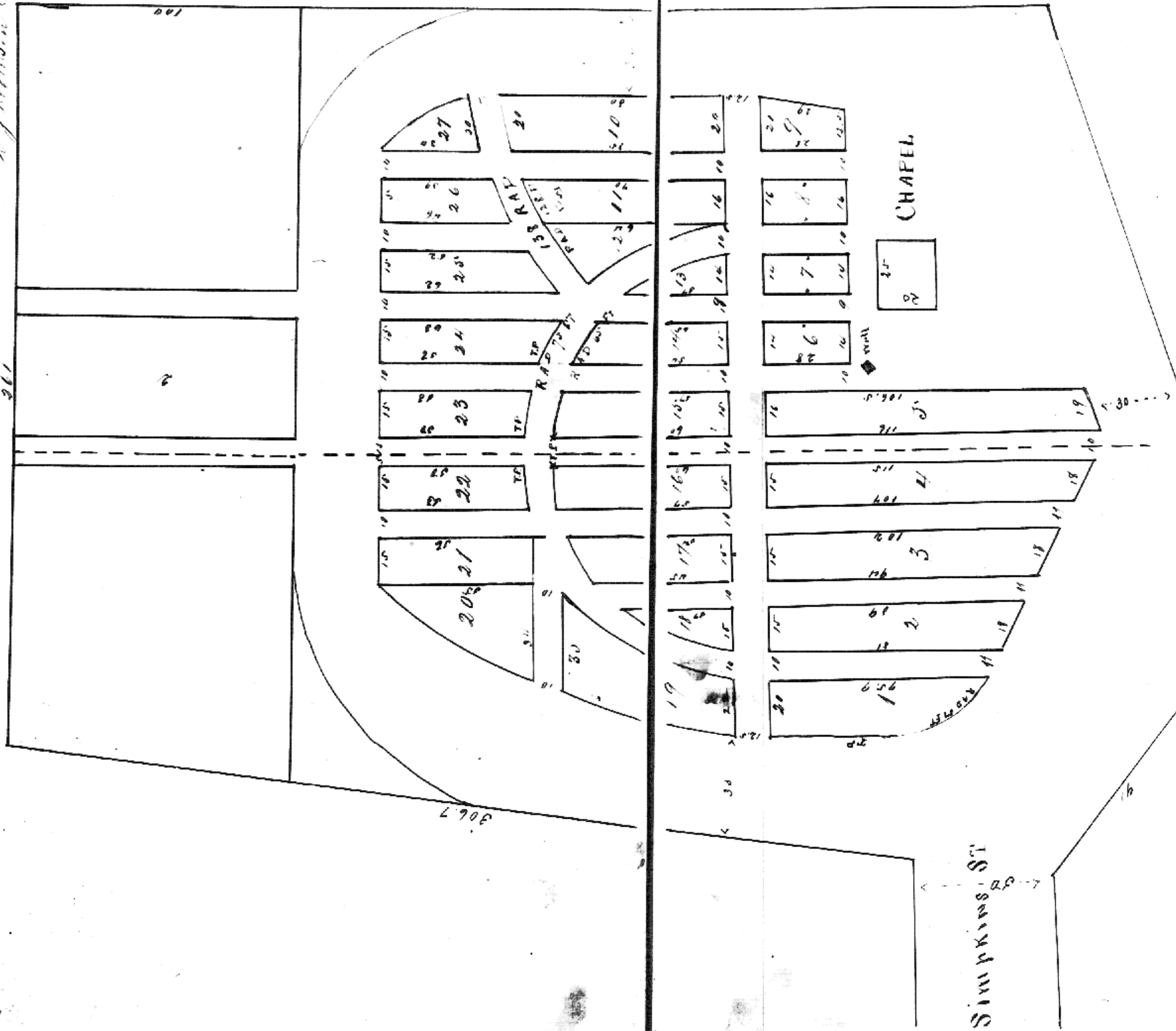


Waldo- Laurel Grove Cemetery
Sec 24, Twp 28, R 21E
Deed S 374-376

374

375

*Laurel Grove Cemetery.
A Subdivision of Lot 1, Block 12,
of the North Western 1/4, Sec 24, Twp 28, R 21, E
By Wilson DeWeger.*



*State of Maryland ss Before me a Justice of the
Attached County I ss Before me a Justice of the
County and in said county personally known
And I have read and approved the above survey and subdivision and that the
same has been a correct representation of the same
done and intended to be done by the said
of April 1900.*

*Filed for Record April 16 1900
Record April 20 1900
Jas. W. H. Reade.*

*Count Affirmed
Justice of the Peace*