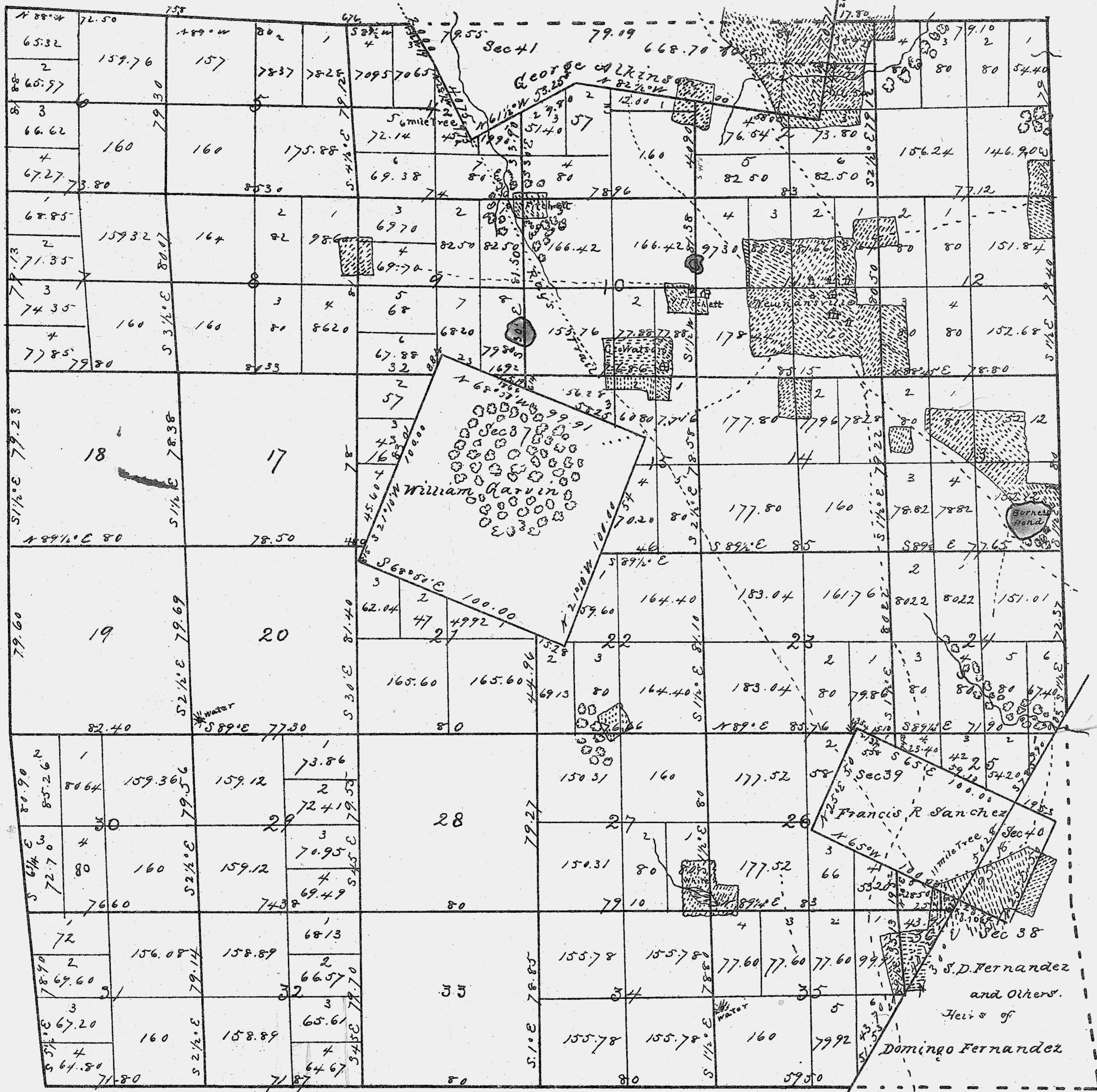


Red with letter of Dec. 1852



Public Land					
Sec	Area	Sec	Area	Sec	Area
1	597.54	13	621.88	25	161.10
2	480.76	14	682.60	26	537.82
3	360.41	15	344.44	27	630.62
4	428.02	16	150.79	28	635.28
5	649.53	17	620.92	29	604.95
6	584.94	18	639.64	30	637.46
7	611.72	19	646.76	31	589.68
8	670.81	20	627.54	32	583.06
9	588.28	21	490.16	33	634.10
10	544.36	22	537.53	34	623.12
11	681.14	23	687.70	35	616.33
12	624.52	24	618.88	36	43.91
Total			19,708.27 Acres		

Private Claims				
Confirmer	Sec	Area	Ref. Am. date	Vol page
William Garvin	37	1000.	12.12.1829	5.415
Domingo Fernandez	38	920.57	Sup. Court U.S. Jan. 1836	
F. R. Sanchez	39	591.53	Sup. Court U.S. Dec. 1843	
Do or Fernandez	40	108.47	" " " "	
Geo Atkinson	41	668.70	Sup. Court U.S. Jan. 1842	
Total		3,689.27 Acres		

Scale 40 ft to an Inch.

This Township was Surveyed by Hayes and Drake in 1826.

The Private Claim Sec 37 was Surveyed by C. C. Tracy Ass<sup>t</sup> Surv. of P. Claims in 1847

The Claims Sec's 38, 39 & 40 were Surveyed the E. Bnd<sup>s</sup> & 59<sup>th</sup> ch<sup>s</sup> of the S. Bnd. of T'ship, the N. & E. lines of Sec 25. N & W of 36, and the N. line of 26, were Resurveyed in June 1850. by A. M. Randolph. Contract with Surveyor Gen<sup>l</sup> of Flo. of June 1849.

The N. W. & 4 miles of the S. Bnd<sup>s</sup> of T. and all Section lines, not named above, were Resurveyed in June 1850. by Ralph W. Norris Contract with Surveyor General of Florida of 29 June 1849. Variation 5° East

Gaspar Carreras } Chairmen  
Ignacio Orizgas }

The Private Claim of Geo. Atkinson, Sec 41 was Surveyed in July 1852. by Marcellus A. Williams D.S. Contract with Surv. Gen<sup>l</sup> of Flo. 19 June 1852 Variation 5° East

Gaspar Carreras } Chairmen  
J. V. Pratt }

Examined Compared with field notes & Approved.

14 December 1852 B. A. Outman  
Surv. Gen.

{ Williams' survey paid for per  
G.L. office Report 2735 of Jan. 1853. }

6127  
25

130.28  
32.57  
97.71